



HOW TO INSTALL A BENETEAU PROPELLER ANODE, NUT AND LOCKING WASHER.

STEP 1



Shown: Beneteau Zinc Propeller Anode,
Brass Nut and Locking Washer

STEP 2



Install Beneteau Locking Washer with the tab
into the propeller hub.

STEP 3



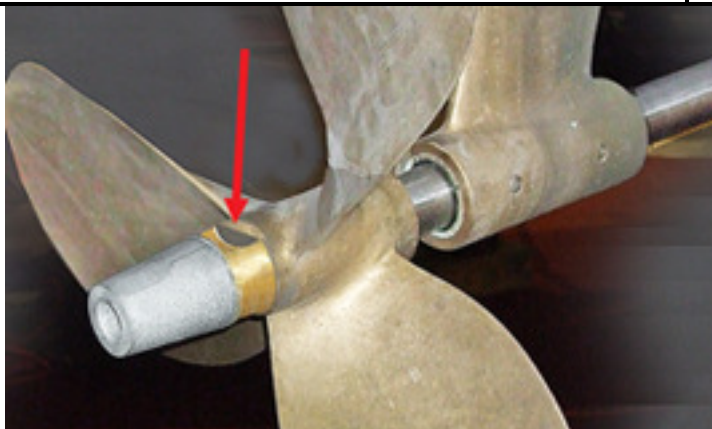
Thread Brass Nut onto Propeller Shaft.

STEP 4



Once the Brass Nut is tightened onto the propeller
shaft, bend up the tabs on the locking ring to secure
the Brass Nut.

STEP 5



A Zinc Anode is installed over the Brass Nut. The
tab on the locking ring is bent up over Brass Nut,
locking it in place. Check red arrow.